

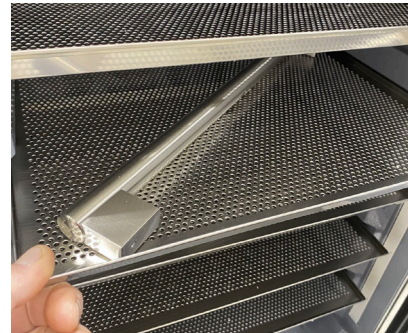


## CC2 HANDLE INSTALL

### Installing the Door Handle on a C2

Unbox the C2 unit.

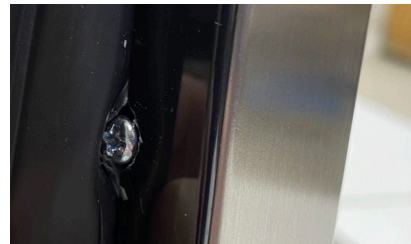
Locate the handle inside of the C2 (will be taped to the interior of the unit).



Locate the handle screws found inside the holes in the door.



Using a Phillips screwdriver, seat both screws into the handle by pushing back the rubber gasket on the interior side of the door.



Once both screws have been seated, finish tightening until handle becomes sturdy.

